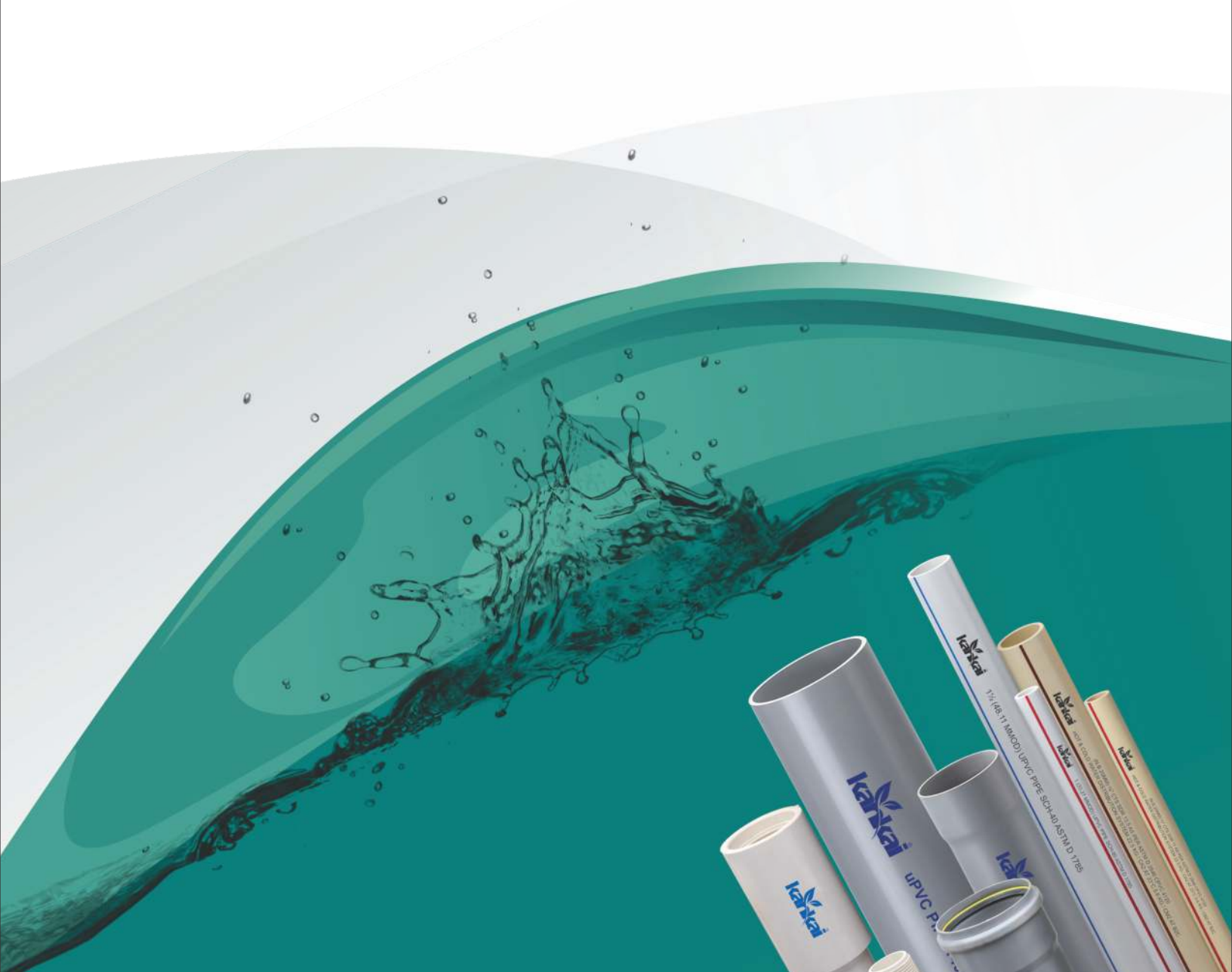


we transit life



PIPES & FITTINGS

AN ISO 9001 : 2015 CERTIFIED COMPANY



Pipes & Fittings
www.kankaipipes.com



COMPANY PROFILE



Kankai Pipes & Fittings Private Limited has been incorporated in 2013 as Plastic pipes manufactures in india. We are Known for our specialization in the field of manufacturing plastic pipes and fittings which has helped us to earn an enviable reputation till date. Our financial stability and a strong work force have given us the confidence as being reliable plastic pipes manufacturers thus offering our clients with quality based products. This has paved our way towards a better business at a consistent pace.

Our motto has always been to offer superior quality products at the best competitive price. An experienced and highly qualified technical team in association with skilled quality managers in this field proves to be a boon for our company. Being emerging plastic pipes manufacturers in india we have focused on providing customized services and on time delivery of our products. sustaining a long term relationship will lead us to acquire a major customer base by supplying the desired range of plastic pipes and fittings.

Mr. Sagar Patel has been an influential guidance as a mentor and it is under his supervision we have been able to overcome the many hurdles towards our success. His rich experience and enthusiasm in the domain as a plastic pipes manufacturers has given us ways to attain a reputed place in the market.

Our Team

At Kankai Pipes & Fittings Private Limited, our belief and confidence has always been on our expertise team of professional who have been a great support at all times. Their experience and in-depth knowledge in the area of manufacturing plastic pipes and fittings has assisted us to capture the market in a big way. We have a team of quality controllers, production staff and administrative controllers who are well acquainted with the latest developments and tools which have become a trend in the current scenario.

Our Infrastructure

As leading plastic pipes manufactures in india, we have been doing well in maintaining our reputation in this domain. Our in house research and development units have helped us with innovative technologies and facilities which are the requirements of the present system. The infrastructure includes a well equipped state-of-art facilities consisting of warehousing units, manufacturing units, packaging units and quality control units which are maintained by our skilled professionals

Client Satisfaction

Ever since our inception in 2013, we have focused to attain high standards with respect to client satisfaction. Over the years, as one of the leading and trustworthy plastic pipes manufacturers, our motto has been to exceed customer satisfaction and win their loyalty. We treat each client as our only client by paying excellent attention to all their needs and queries. We ensure that every service is met as per customer's expectations. At Kankai Pipes & Fittings Private Limited, we welcome all our customers with open arms and take appropriate care of their needs and security. As one of the most reputed manufacturers, we are focused on empowering our clients with necessary information related to plastic pipes and fittings. Our mode of payment too is completely trouble free.



Index

01 CPVC Plumbing Pipes

02 CPVC Plumbing Fittings

03 uPVC Plumbing Pipes

04 uPVC Plumbing Fittings

05 uPVC Column Pipes

07 uPVC Pressure Pipes

09 SWR Pipes & Fittings



Salient Feature

- Ultimate for Hot & Cold Water Uses.
- Smooth Internal Surface & Energy Saving.
- High Impact Strength and Durability.
- Strong and Tough Materials.
- Corrosion Resistance.
- Very Easy & Fast Installation.
- Lower Bacterial Growth.
- Fire Resistance.
- Unaffected By Chlorine In The Water.
- Very Low Thermal Expansion.

Applications

- Hot and cold potable water distribution in buildings of all types - residential (low rise & high rise), commercial complexes & institutes
- Can be used in fire suppression systems (sprinklers etc.) due to its fire resistance.
- Corrosive fluid handling industries.

Specifications

Dimension And Pressure Rating Chart of CPVC Pipe

| Nominal Pipe Size | | Outer Diameter (mm) | | SDR 11 | | | | SDR 13.5 | | | |
|-------------------|----|---------------------|----------------------|---------------------|---------------------|---------------------|------|---------------------|---------------------|---------------------|------|
| | | | | Wall Thickness (mm) | | Working Pressure at | | Wall Thickness (mm) | | Working Pressure at | |
| | | | | | | 23°C | 82°C | | | 23°C | 82°C |
| inch | mm | Average | Tolerance | Min. | Tolerance | Kg/cm ² | | Min. | Tolerance | Kg/cm ² | |
| 0.50" | 15 | 0.625 (15.90) | ± 0.003 (± 0.08) | 0.068 (1.73) | + 0.020 (+ 0.51) | 28.1 | 7.0 | 0.055 (1.40) | + 0.020 (+ 0.51) | 22.6 | 5.6 |
| 0.75" | 20 | 0.875 (22.20) | ± 0.003 (± 0.08) | 0.080 (2.03) | + 0.020 (+ 0.51) | 28.1 | 7.0 | 0.065 (1.65) | + 0.020 (+ 0.51) | 22.6 | 5.6 |
| 1.00" | 25 | 1.125 (28.60) | ± 0.003 (± 0.08) | 0.102 (2.59) | + 0.020 (+ 0.51) | 28.1 | 7.0 | 0.083 (2.12) | + 0.020 (+ 0.51) | 22.6 | 5.6 |
| 1.25" | 32 | 1.375 (34.90) | ± 0.003 (± 0.08) | 0.125 (3.18) | + 0.020 (+ 0.51) | 28.1 | 7.0 | 0.102 (2.59) | + 0.020 (+ 0.51) | 22.6 | 5.6 |
| 1.50" | 40 | 1.625 (41.30) | ± 0.004 (± 0.010) | 0.148 (3.76) | + 0.020 (+ 0.51) | 28.1 | 7.0 | 0.120 (3.06) | + 0.020 (+ 0.51) | 22.6 | 5.6 |
| 2.00" | 50 | 2.125 (54) | ± 0.004 (± 0.010) | 0.192 (4.90) | + 0.023 (+ 0.58) | 28.1 | 7.0 | 0.157 (4.00) | + 0.023 (+ 0.58) | 22.6 | 5.6 |



CPVC Fittings

Salient Feature

- Good abrasion resistance
- Easily portable
- Light weight
- Made from top-grade raw materials
- High floor characteristics
- Easy to handle
- A smooth inner wall that reduces frictional losses
- Inert to most alkaline and acidic solution
- Excellent strength and flexibility
- Excellent chemical and corrosion resistance

CPVC Brass Fittings

Salient Feature

- Unmatched quality
- Resistance to corrosion
- Unsurpassable performance
- Easy installation
- Precise dimension
- Accuracy in design
- Reliable
- Superior tensile strength

Specifications

- Size : Ranging from ½ to 2 inches
- Threads : UNEF, UNF, UNC, NPT, BSP, BSPT, BSW, BA, ISO Metric (MM Threads)
- Plating : Natural, Chrome, Nickel, Tin Plating, other coating catering to customer specifications



Salient Feature

- Seamless performance
- Leak proof
- Immunity to electrolytic or galvanic corrosion
- No fungal or biological growth
- Less wear resistance
- Nominal rates
- Sturdy construction
- Dimensionally accurate
- Reliability
- Excellent durability
- Quality assured
- Easy to install

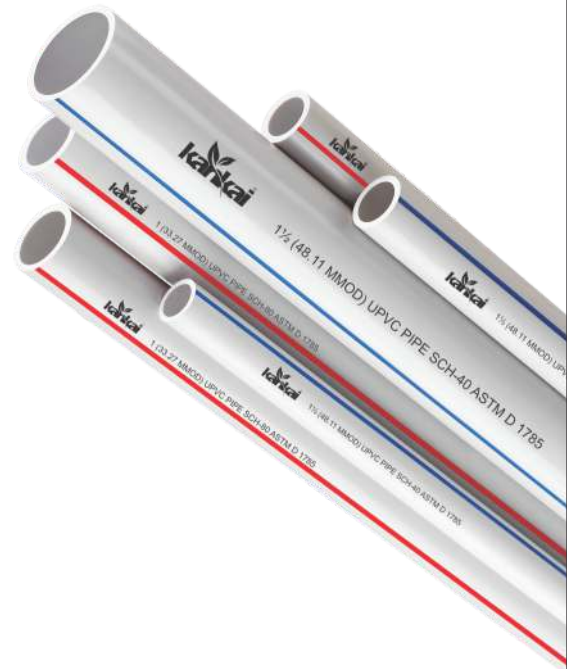
Applications

- Cold water supply in building construction
- Industrial process lines
- Swimming pools
- Salt water lines
- Aggressive / corrosive fluid transportation
- Dye plants, chrome, zinc plating and tanning plants
- Sugar, paper and distillery industries
- Coal washing and ash handling

Product Name : Plumbing Pipes
 Range : 0.5" to 4" in schedule 40 & 80 as per ASTM-D-1785
 Standard : As per ASTM-D-1785
 Colour : White
 Length : Available in 3 & 6 meter

Technical Parameters

| Nominal Diameter | | Outside Diameter (mm) | | SCHEDULE 40 | | | SCHEDULE 80 | | |
|------------------|-----|-----------------------|-------|---------------------|------|---------------------------|---------------------|------|---------------------------|
| | | | | Wall Thickness (mm) | | Working Pressure at 23° c | Wall Thickness (mm) | | Working Pressure at 23° c |
| inch | mm | Min. | Max. | Min. | Max. | Kg/cm ² | Min. | Max. | Kg/cm ² |
| 0.50" | 15 | 21.2 | 21.5 | 2.8 | 3.3 | 41.4 | 3.7 | 4.2 | 58.6 |
| 0.75" | 20 | 26.6 | 26.8 | 2.9 | 3.4 | 33.1 | 3.9 | 4.4 | 47.6 |
| 1.00" | 25 | 33.3 | 33.5 | 3.4 | 3.9 | 31.1 | 4.5 | 5.1 | 43.4 |
| 1.25" | 32 | 42.0 | 42.3 | 3.6 | 4.1 | 25.5 | 4.8 | 5.4 | 35.9 |
| 1.50" | 40 | 48.1 | 48.4 | 3.7 | 4.2 | 22.8 | 5.1 | 5.7 | 32.4 |
| 2.00" | 50 | 60.2 | 60.5 | 3.9 | 4.4 | 19.3 | 5.5 | 6.2 | 27.6 |
| 2.50" | 65 | 72.8 | 73.2 | 5.2 | 5.8 | 20.7 | 7.0 | 7.8 | 29.0 |
| 3.00" | 80 | 88.7 | 89.1 | 5.5 | 6.1 | 17.9 | 7.6 | 8.5 | 25.5 |
| 4.00" | 100 | 114.1 | 114.5 | 6.0 | 6.7 | 15.2 | 8.6 | 9.6 | 22.1 |



ISO 9001 : 2015
CERTIFIED COMPANY

uPVC

Plumbing Fittings

uPVC Fittings

Salient Feature

- Durability
- Reliability
- Sturdy construction
- Economic rate
- Water and leak proof

Product Name : uPVC Plumbing Fitting

Range : 0.5" to 2" in schedule 80 as per ASTM D-2467

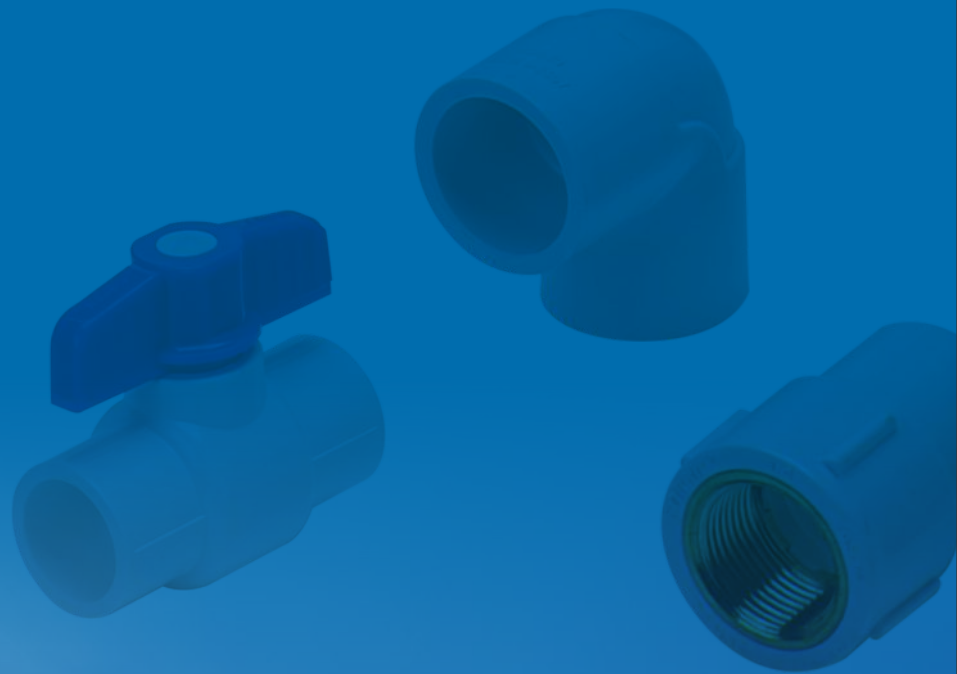
Standard : ASTM D-2467

Colour : White

uPVC Brass Fittings

Salient Feature

- Dimensional accuracy
- High quality
- On time delivery
- Develop as per ASTM Standard
- Reliable
- Durable
- Corrosion resistant



Salient Feature

- Low maintenance and long life
- No contamination because of corrosion or incrustation
- High tensile load capability
- Leak proof joints
- High impact strength
- Low cost compared to C.I and G.I pipes
- Smooth bore that offers excellent flow properties
- Easy in installation
- Economically satisfied
- Minimum frictional losses thus saving power
- 25% higher discharge charge than G.I pipes
- Non conductor of Low thermal conductivity and electricity

Applications

- Water rising for submersible pump set
- It is commonly used as replacement on the place for MS, ERW, GI, HDPE and stainless steel

Product Name : uPVC Column Pipes
 Range : 1" to 4" Outer Diameter (25mm to 100mm Nominal Diameter)
 Colour : White
 Length : Available in 3 meter
 Types : Available in Three grades

Some important features of our column pipes, couplers and its accessories

- Square threads of pipes as well as coupler gives very high tensile load capacity, high izod impact and easy fitment, re-fitment and longer life
- The rubber dampeners, silent system provides leak proof fittings and also absorbs the vibration of the pump which results in longer life of motor and pump bearing.
- Our square threads of pipes as well as coupler are of best designed and manufactured in CNC machines in order to provide best accuracy and quality.
- The rubber ring like step ring, L-ring, O-ring & Seal ring are of natural rubber and best to absorb the shock of motor
- Our thick and thin portion of the pipes has been so developed in order to absorb the full torque produced due to motor thus resulting long life.
- The technically developed adapters have 11 TPI metric threads at one end which fits into motor and square threads at one end which fits into column pipes.

Technical Parameters

Capacity to pull weight of submersible pumps column pipes with chain pulley

| Nominal Diameter | | O.D. Nominal | Product Range | | |
|------------------|-----|-----------------|-------------------------------|----------|-------|
| inch | mm | | Ultimate Breaking load (Kgs.) | | |
| | | | Medium | Standard | Heavy |
| 1.00" | 25 | 33 | 1400 | 1800 | - |
| 1.25" | 32 | 42 | 2100 | 2600 | 3100 |
| 1.50" | 40 | 48 | 2500 | 3000 | 4000 |
| 2.00" | 50 | 60 | 2800 | 3800 | 4700 |
| 2.50" | 65 | 75 | 3500 | 5000 | 7000 |
| 3.00" | 80 | 88 | 5000 | 7000 | 9500 |
| 4.00" | 100 | 113 | 7500 | 10300 | 16000 |

*Technical specification are subject to change without prior notice.

ISO 9001 : 2015
CERTIFIED COMPANY

uPVC
Column Pipes



Useful Submersible Pump
Suitable up to
1500 Feet



Salient Feature

- Suitable for potable water supplies.
- Light weight offers total economy in handling, transportation & installation
- Seamless, strong & resilient
- Odorless and hygienic for potable water
- Longer lasting PVC is free from weakness caused by formation, rusting and weathering.
- Energy efficient
- High flow characteristics

Applications

- Water supply
- Lift irrigation
- Main and sub main line for drip and sprinkler irrigation system
- Fertilizer, lifting, transporting, conveying, distributing disposing or tapping water
- Urban and rural areas drinking water scheme

Product Name : uPVC pressure pipes
 Range : 20 mm to 315 mm Outer Diameter
 Pressure Rating : 2.5 kg/cm² to 10.0 kg/cm²
 Standard : IS : 4985 : 2000
 Colour : Light Grey
 Length : Available in 4,5 & 6 meter
 Types : Plain ended
 Socketed pipe for elastomeric sealing ring
 Socketed pipe for solvent cement jointing

Technical Parameters

| Nominal Diameter | | Mean Outside Diameter | | Outer Diameter at any Point | | Wall Thickness | | | | | | | | | |
|------------------|-----|-----------------------|-------|-----------------------------|-------|-------------------------------------|------|-----------------------------------|------|-----------------------------------|------|-----------------------------------|------|------------------------------------|------|
| | | | | | | Class - 1 2.5 kg/cm ² | | Class - 2 4 kg/cm ² | | Class - 3 6 kg/cm ² | | Class - 4 8 kg/cm ² | | Class - 5 10 kg/cm ² | |
| inch | mm | Min. | Max. | Min. | Max. | Min. | Max. | Min. | Max. | Min. | Max. | Min. | Max. | Min. | Max. |
| 0.50" | 20 | 20 | 20.3 | 19.5 | 20.5 | - | - | - | - | - | - | - | - | 1.1 | 1.5 |
| 0.75" | 25 | 25 | 25.3 | 24.5 | 25.5 | - | - | - | - | - | - | 1.2 | 1.6 | 1.4 | 1.8 |
| 1.00" | 32 | 32 | 32.3 | 31.5 | 32.5 | - | - | - | - | - | - | 1.5 | 1.9 | 1.8 | 2.2 |
| 1.25" | 40 | 40 | 40.3 | 39.5 | 40.5 | - | - | - | - | 1.4 | 1.8 | 1.8 | 2.2 | 2.2 | 2.7 |
| 1.50" | 50 | 50 | 50.3 | 49.4 | 50.6 | - | - | - | - | 1.7 | 2.1 | 2.3 | 2.8 | 2.8 | 3.3 |
| 2.00" | 63 | 63 | 63.3 | 62.2 | 63.8 | - | - | 1.5 | 1.9 | 2.2 | 2.7 | 2.8 | 3.3 | 3.5 | 4.1 |
| 2.50" | 75 | 75 | 75.3 | 74.1 | 75.9 | - | - | 1.8 | 2.2 | 2.6 | 3.1 | 3.4 | 4.0 | 4.2 | 4.9 |
| 3.00" | 90 | 90 | 90.3 | 89.9 | 91.1 | 1.3 | 1.7 | 2.1 | 2.6 | 3.1 | 3.7 | 4.0 | 4.6 | 5.0 | 5.7 |
| 4.00" | 110 | 110 | 110.4 | 108.6 | 111.4 | 1.6 | 2.0 | 2.5 | 3.0 | 3.7 | 4.3 | 4.9 | 5.6 | 6.1 | 7.1 |
| 4.50" | 125 | 125 | 125.4 | 123.5 | 126.5 | 1.8 | 2.2 | 2.9 | 3.4 | 4.3 | 5.0 | 5.6 | 6.4 | 6.9 | 8.0 |
| 5.00" | 140 | 140 | 140.5 | 138.3 | 141.7 | 2.0 | 2.4 | 3.2 | 3.8 | 4.8 | 5.5 | 6.3 | 7.3 | 7.7 | 8.9 |
| 6.00" | 160 | 160 | 160.5 | 158.0 | 162.0 | 2.3 | 2.8 | 3.7 | 4.3 | 5.4 | 6.2 | 7.2 | 8.3 | 8.8 | 10.2 |
| 7.00" | 180 | 180 | 180.6 | 177.8 | 182.2 | 2.6 | 3.1 | 4.2 | 4.9 | 6.1 | 7.1 | 8.0 | 9.2 | 9.9 | 11.4 |
| 8.00" | 200 | 200 | 200.6 | 197.6 | 202.4 | 2.9 | 3.4 | 4.6 | 5.3 | 6.8 | 7.9 | 8.9 | 10.3 | 11.0 | 12.7 |
| 9.00" | 225 | 225 | 225.7 | 222.3 | 227.7 | 3.3 | 3.9 | 5.2 | 6.0 | 7.6 | 8.8 | 10.0 | 11.5 | 12.4 | 14.3 |
| 10.00" | 250 | 250 | 250.8 | 247.0 | 253.0 | 3.6 | 4.2 | 5.7 | 6.5 | 8.5 | 9.8 | 11.2 | 12.9 | 13.8 | 15.9 |
| 11.00" | 280 | 280 | 280.9 | 276.6 | 283.4 | 4.1 | 4.8 | 6.4 | 7.4 | 9.5 | 11.0 | 12.5 | 14.4 | 15.4 | 17.8 |
| 12.00" | 315 | 315 | 316.0 | 311.2 | 318.8 | 4.6 | 5.3 | 7.2 | 8.3 | 10.7 | 12.4 | 14.0 | 16.1 | 17.3 | 19.9 |

ISO 9001 : 2015
CERTIFIED COMPANY

uPVC

Pressure Pipes



We provide SWR pipe fittings that designed in conformation with IS-13592 specifications for pipes and IS- 14735 specifications for fittings. These are energy efficient and widely demanded for drainage system for homes, offices, hotels, commercial complexes, drain lines in industries, chemical plants & power plants, also for drainage systems at public places.

Salient Feature

- **Strong and durable :**
The S.W.R. pipes & fittings are strong, sturdy and unbreakable. These are unaffected by weather conditions, termite, bacteria and fungus growths.
- **Easy to handle and Join :**
These are light in weight, therefore easy to handle and join.
- **Better flow characteristic :**
There is no deposit formation, so diameter of pipe remains the same resulting in better flow
- **Energy saving :**
Have smooth internal surface which implies low frictional loss. Hence power consumption is on lower side.
- **Leak proof :**
These are leak proof due to close dimensional tolerance and precision design.
- **Safe :**
These are fire resistant and non conductor of electricity.
- **Resistant to :**
Rust, UV radiation, most of the chemicals
- **Economical :**
These are cost effective and long lasting.
- **Maintenance free :**
No breakage and free from rusting and unaffected by environmental stress.

Applications

Agricultural :

- Drainage system for home, offices, hotels, residential & commercial complexes and hospitals
- Sanitation purposes

Industrial :

- In industries, chemical plants, power plants drains as chemical waste lines & overflow lines.

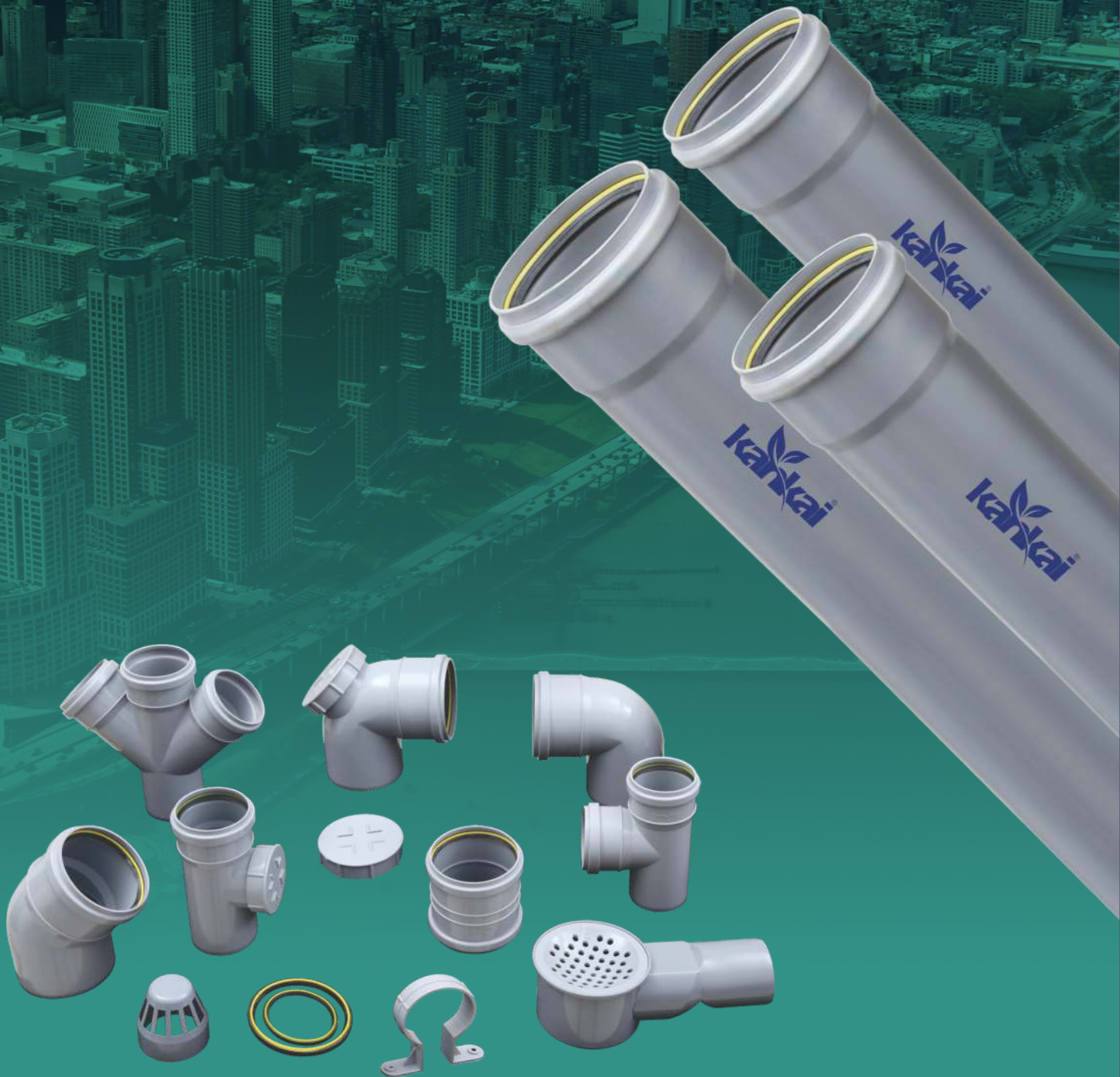
Other :

- Drainage system for public places such as airports, railway stations, bus stands, hospitals and theaters
- In main vent lines in drainage schemes.

ISO 9001 : 2015
CERTIFIED COMPANY

SWR

Pipes & Fittings





Quality Policy

Assuring relevancy and quality is what makes us a global player in its own right. We assure that the products are met as per the customer's expectations. Thus, we ensure the highest standard of output. In terms of quality assurance, we have set targets for measuring our performance and constantly discover prospects for enhancement quality is our hallmark and we conduct consistent quality checks on every product to ensure that no leakage or breakage takes place any where in the service.

All pipes and fittings at Kankai is manufactured under stringent process control and carefully monitored throughout the manufacturing process to offer our customers flawless products. We strive to achieve 100% customer satisfaction and to achieve this we ensure :

- Zero defect products
- Best services
- Timely dispatch
- Client satisfaction at every level
- Effective communication with clients
- Seek for performance feedback from customers for improvement









Kankai Pipes & Fittings Pvt. Ltd.

Regd. Office : Survey No. 97/4, Padadhari Morbi Road,
Village-Ukarda, Taluka-Padadhari, Rajkot-360 110 (Guj.) INDIA

 www.kankaipipes.com
 info@kankaipipes.com